

# SkyFactory

- [Welcome](#)
- [Modpack Download Tutorial](#)
- [Achievement Book](#)
- [Banned Item List](#)
- [Voting](#)

# Welcome

Welcome to the **SkyFactory 2.4** Server! This server offers a modded experience. From this main page, you will be able to access all the information you will need to know in order to get the best experience possible from our **SkyFactory 2.4** server!

## Contents:

- [Modpack Download Tutorial](#)
- [Banned Item List](#)
- [Voting](#)

The logo for VentureKraft, featuring the word "VENTUREKRAFT" in a bold, stylized font. The letters are white with a thick red outline and a red-to-white gradient fill. The 'K' is particularly large and stylized, with a red outline and a red-to-white gradient fill. The letters are arranged in a slightly overlapping, blocky fashion.

# Modpack Download Tutorial

**Note:** This article was originally written by Rachel.

## How to get SkyFactory 2.4

New to modded Minecraft? Never used ATLauncher? Not to worry, just follow this guide and you'll be playing SkyFactory in no time!

### Step 1:

Download the ATLauncher.

Go to <https://www.atlauncher.com/downloads> and select your operating system from the three download links at the bottom.

### Step 2:

Place the .exe file that you downloaded in its own empty folder and run it. (I put it on my desktop so I could access it quickly)

### Step 3:

Click on the "Accounts" tab and add your Minecraft account.

SfetmiN\_1571883641.png

### Step 4:

Click on the "Packs" tab and select "New Instance" on the Sky Factory 2 pack. You can search Sky in the search bar if you can't find it.

kkz6jj4\_1571883695.png

**Step 5:**

Click the "Install" button on the small menu that pops up.

NURjHLx\_1571883723.png

**Step 6:**

Check the boxes by Lucky Blocks, MorePlayerModels, Tails, and Vein Miner. Leave the boxes by Dual Hotbar and InfiniteInvo unchecked, then click "Install".

63BkrPg\_1571883772.png

**Step 7 (Optional):**

If you choose to skip this step, proceed to step 12.

Go to [optifine.net/downloads.php](http://optifine.net/downloads.php) and download OptiFine 1.7.10 HD U D7. Do not install it; ONLY download it.

**Minecraft 1.7.10**

OptiFine HD U E7	Download	(Mirror)	Changelog	Forge #1614	04.04.2018
OptiFine HD U E3	Download	(Mirror)	Changelog	Forge #1614	29.12.2017
OptiFine HD U D8	Download	(Mirror)	Changelog	Forge #1614	04.05.2017
OptiFine HD U D7	Download	(Mirror)	Changelog	Forge #1614	14.03.2017
OptiFine HD U D6	Download	(Mirror)	Changelog	Forge #1614	29.06.2016
OptiFine HD U D4	Download	(Mirror)	Changelog	Forge #1614	28.04.2016
OptiFine HD U D3	Download	(Mirror)	Changelog	Forge #1614	20.03.2016

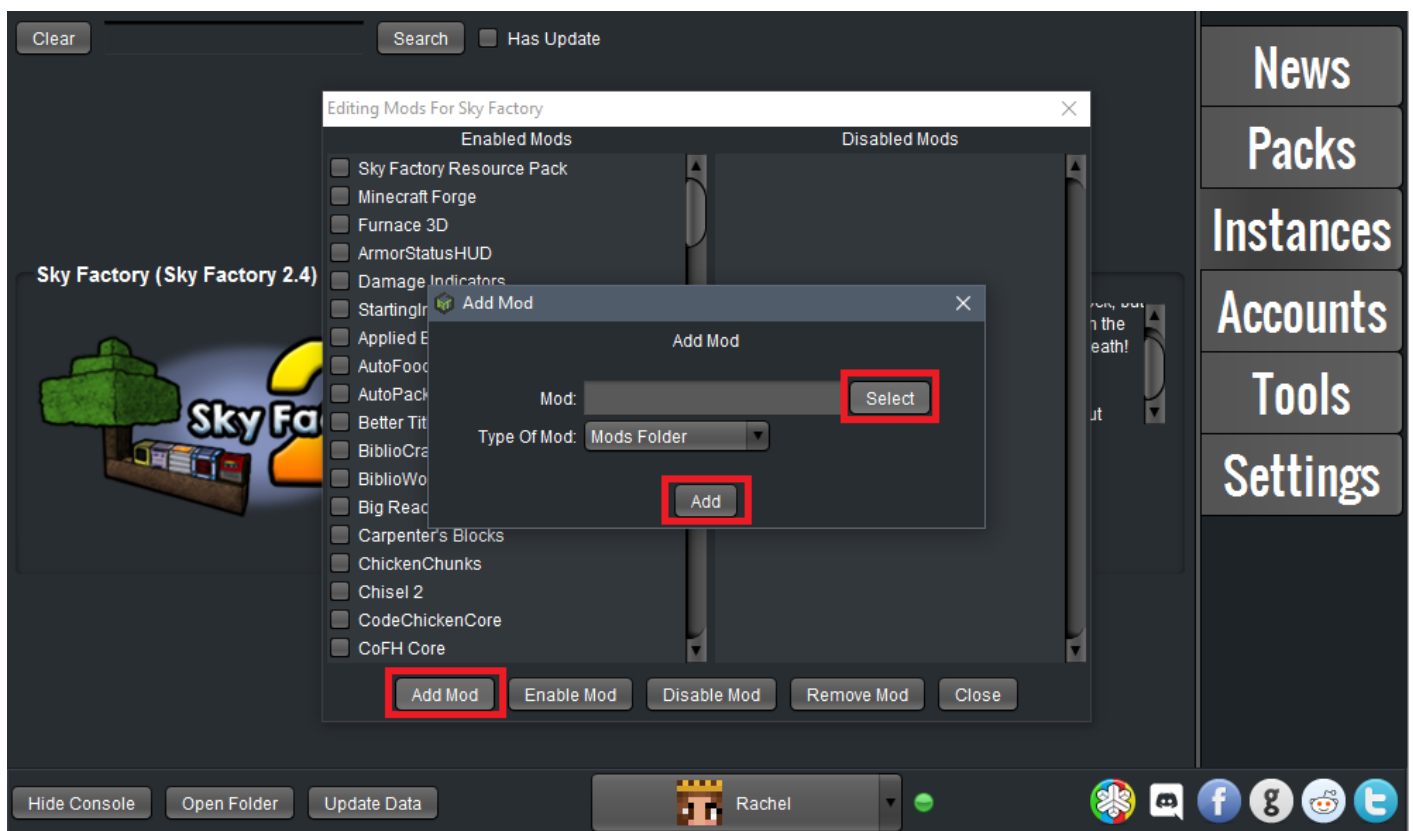
## Step 8 (Optional Continued):

When the modpack is done installing, click on the "Instances" tab and select "Edit Mods".

Kuulfar\_1571883829.png

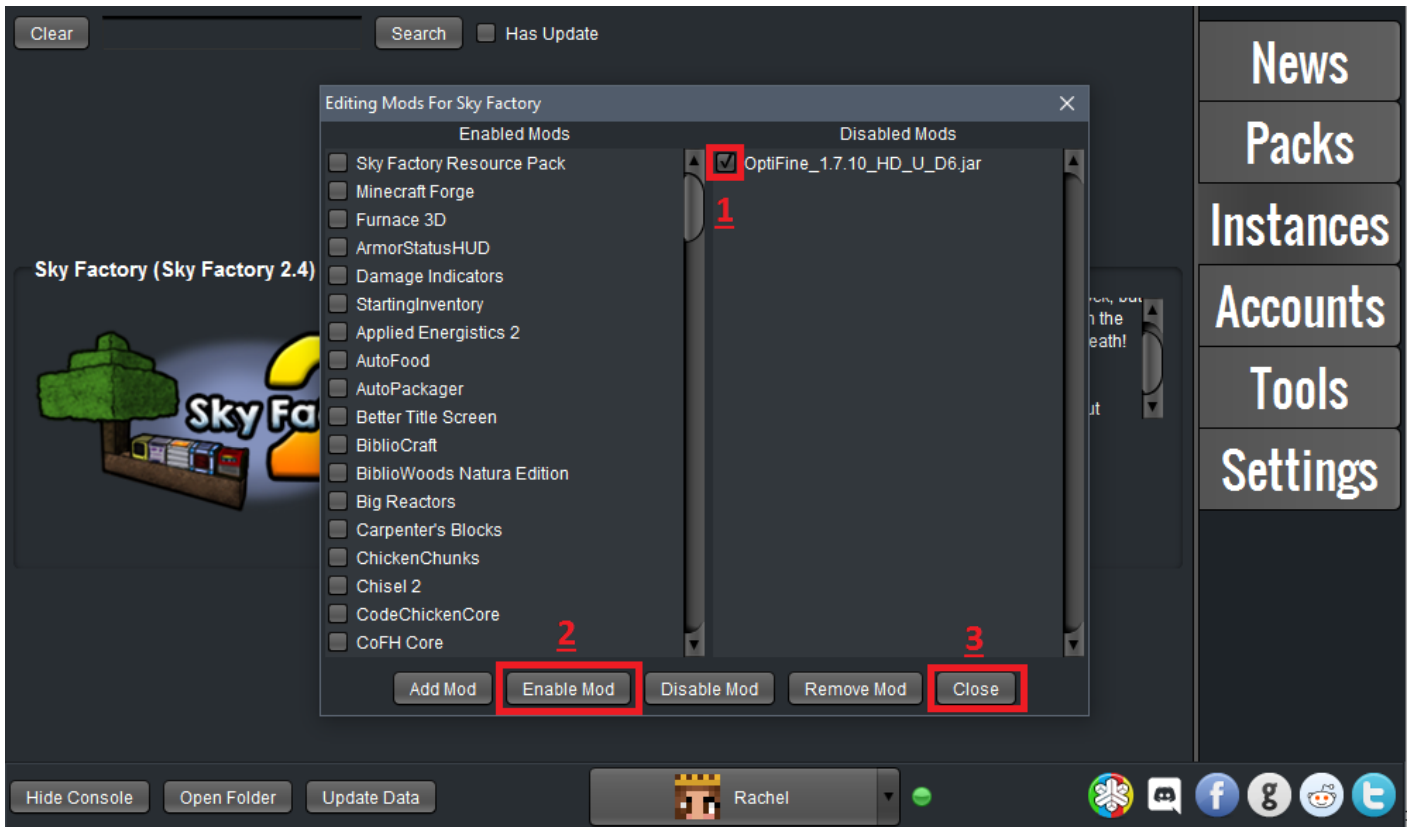
## Step 9 (Optional Continued):

Click the "Add Mod" Button. On the small screen that pops up, click the "select" button. Navigate to where you placed the Optifine file (by default, in your "Downloads" folder) and select it; then hit "add".



## Step 10 (Optional Continued):

Check the box next to Optifine, then hit "Enable Mod". Close this window.



## Step 11:

Click on the "Settings" tab, then click on the "Java/Minecraft" tab.

Make sure that your Initial Memory/RAM and your Maximum Memory/RAM is set to **at least** 1024 MB (preferably 4096 MB if your PC has at least 4GB RAM).

It is possible to load the game with these settings, but it may freeze or crash during initialization, and you will experience lag in-game. Higher values up to 4096 MB are recommended.

cBslQ4i\_1571883928.png

## **Step 12:**

Click on the "Instances" tab and then click "Play". Depending on how powerful your computer is and how much RAM you allocated, the game can take up to 10 minutes to boot. This is normal and you should not be concerned.

If you followed steps 8-11, don't forget to click "Options" when your game boots up and adjust all the new Video Settings options that the Optifine mod has added, especially making sure that you turn Fast Math to On, Graphics to Fast, Smooth Lighting None, Fog off, Trees to Fast, and most important if you lag: TURN OFF ALL PARTICLES.

Hopefully this tutorial has helped you and I hope to see you on the server soon!

**Note:** If you are crashing during loading, try increasing your allocated ram to a higher number (as shown in step 12), or updating your java to the latest *64-bit* version here:

<https://www.java.com/en/download/manual.jsp>

# Achievement Book

As much as we REALLY wanted to keep the achievement book enabled, it turns out that it causes **extreme** issues in a server environment. As a result I have a copy of the text here for you so you can still follow along and keep track of achievements! Happy hunting!

Welcome To SkyFactory 2!

A Modpack By Bacon\_Donut

Hello and welcome to Sky Factory 2, a modded Sky Block mod pack! An infinite world of possibility awaits you...after you build it, of course, because you'll be starting in a void world with nothing between you and death but a single tree on one piece of dirt. But don't panic! The mods in this pack will allow you to get all the resources you need to build yourself an amazing world! Read on for more info about how to play this pack, who put it together, and for a list of goals for you to accomplish!

How To Use This List

You will see challenges broken into ages that represent the general path of progression, although you do not need to do them in order. Simply check the box next to each challenge as you complete them. Careful though, they get harder as you go along!

Credits

This pack was put together by me, Bacon\_Donut. I make Minecraft content full time and you can find me here: | [Twitch.tv/Bacon\\_Donut](https://Twitch.tv/Bacon_Donut) | I'm live on Twitch Monday through Friday starting at 9pm US Eastern time. I also post daily videos to YouTube including an official Sky Factory tutorial series. You can find that here: | [YouTube.com/BaconDonutTV](https://YouTube.com/BaconDonutTV) |

Special thanks also goes to

Wyld, for making this pack a little more magical and a little more evil. | Tterrag, for the Simple Achievement mod, and giving us the ability to twerk on trees. | KiwiFails, for the amazing custom mod textures. | Lex Manos, for making YUNoMakeGoodMap which gives us our lovely void world, and also for making Forge itself! | YelloSnowflake, for the Lucky Block config. | And finally, big thanks to my friends and twitch subs who helped with the testing!

The Challenges

You can't ever "beat" the pack, but I've provided a list of challenges designed to help you progress, and give direction to your play. Don't worry if you don't know how to do some of them, have fun with the process of searching for answers. You'll learn a lot and have some fun too! | They are divided into ages that roughly match up to game progression, but you do NOT have to do them in order!

==== **Wood Age** =====



A new age dawns before you! You don't have anything to work with but this tree, so let's make the most of it!::1

Use a Crook on leaves to get saplings and a Silkworm::0

Make Dirt by composting saplings in an Oak Barrel::0

Infest leaves with a Silkworm::0

Use a Crook on Infested Leaves to get string::0

Craft a Sieve::0

Collect rain water in a Oak Barrel::0

Craft Cobblestone from the small Stones that drop from sifting Dirt::0

Use a Hammer to turn Cobble into Gravel, Gravel into Sand and Sand into Dust::0

Sift Gravel Sand and Dust in a Sieve::0

Make Tinkers Construct Tools from Bone or Flint::0

Make Clay by putting Dust into a water filled Barrel::0

Craft and cook a Crucible::0

Heat a Crucible with a Torch and insert Stones or Cobble to make Lava::0

Build a Cobblestone generator::0

### ----- **Stone Age** -----

Now that you have a good source of blocks it's time to expand, upgrade, and improve your island a bit!::1

Make a dark room 25 blocks away from your base for spawning mobs and getting loot::0

Make a field of grass 25 blocks away from your base for spawning animals::0

Build a second layer to your island, below the level you started from::0

Make Obsidian with a Stone Barrel::0

Make a Tinkers Construct smeltery for processing ore::0

Upgrade an existing Tinkers tool with a metal part::0

Automate your Cobble generator with a Transfer Node::0

Update your monster farm to kill monsters automatically::0

### ----- **Farming Age** -----

Make a Watering Can::0

Prepare a farming space for several crops::0

Break tall Grass to get a Minicio Seed::0

Make a Mattock from Tinkers Construct::0

Start a food farm and a Minicio Farm::0

Use a Sprinkler to water a farm (doesn't work on Magical Crops)::0

Use Lily pads of Fertility to speed up a farm::0

Craft an Iron Seed::0

Craft a Diamond Seed::0

Craft Zivicio Infused armor::0

### --- **Age of Exploration** ---

Fly::0

Use an Angel Block and your ability to fly to start a new island somewhere else::0

Plant a flower in 5 biomes::0

Travel to the Nether::0

Use a Diamond Dolly to bring home 5 Blaze Spawners::0  
Kill a Wither::0  
Travel to the Deep Dark::0  
Travel To the End::0  
Kill the Ender Dragon::0  
Hatch a Dragon Egg and train it::0

#### ----- **Machine Age** -----

Craft and power a generator of some kind::0  
Use a Pulverizer to automatically turn Cobble to Gravel::0  
Use Energy Conduits to power several machines at once::0  
Automate a farm with a Farming Station::0  
Link an Ender Pouch to an Ender Chest::0  
Craft a Chunk Loader::0  
Create an Applied Energistics system to store your things::0  
Craft and use Ender Quarry::0

#### ---- **Age of Tech** ----

Connect to your AE system wirelessly::0  
Teleport yourself with a Staff of Travelling::0  
Recharge something with a Charge Pad::0  
Heal Yourself with a Health Pad::0  
Autocraft something with a Cyclic Assembler::0  
Connect two AE networks with a Quantum Bridge::0  
Fill a Deep Storage Unit to maximum capacity::0

| |-----**The End**-----| |

# Banned Item List

**Note:** This article was originally written by Rttlr.

Because we want you to be able to experience the modpack as it is meant to be played, we have banned as few items as possible. Here is the complete list of banned items on our server.

Note: Reactors are not banned but their max size is reduced from the insane default max of 50x50 to a much more reasonable (but still more prolific than anyone could need) 20x20. If your reactor is well-designed it will still output more power than you could ever possibly use. You may build multiple reactors, but only for the purposes of providing power to areas that your first reactor can not reach due to chunks unloading.

- Hand of Ender: Allows theft
- Hand of Death: PvP bypass
- Redwood Sapling: Can cause lagspikes upon growth
- Sacred Rubber Sapling: Can cause lagspikes upon growth
- Mega Rubber Sapling: Can cause massive lagspikes upon growth

- Sacred Rubber Sapling (enchanted): Will crash servers upon growth, bypasses plot protections
- Dolly: Bypasses protection and dupe glitch
- Block Breakers: Dupe glitch
- Spot Loader: If used in excess can cause server lag
- Sun Dial: Allows non-staff to completely control the entire servers' daycycle
- Weather Controller: Allows non-staff to completely control the entire servers' weather
- Florbs: Bypasses PvP
- Voodoo Doll: Bypasses PvP
- Dimension Builder: Can cause extreme server lag
- Buster Shot: Bypasses PvP
- Needlegun Ammo (sludge): Bypasses PvP
- Needlegun Ammo (lava): Bypasses PvP
- Needlegun Ammo (anvil): Bypasses PvP
- Needlegun Ammo (sewage): Bypasses PvP
- Filing Cabinet: Dupe glitch

- Knapsack: Dupe glitch
- Bibliocraft Workbenches: Dupe glitch
- Chunk Loaders: Parent mod removed from server due to issues it was causing.
- Traveller's Belt: Dupe glitch
- **Witches Hand: No longer Banned!!!**
- Mob Harness: Can crash server
- /dev/null: Dupe glitch
- **Luggage: No longer Banned!!!**
- All Sync items: Caused several issues
- Both Anti-Material Rockets and SPAMR Launcher: Bypasses island protections
- Matter Cannon: Bypasses island protections
- Crane Backpack: Bypasses island protections
- Autonomous Activator block placement
- Golden Bag Of Holding: Dupe Glitch

# Voting

By voting on the SkyFactory 2.4 server you can receive special rewards while also helping us grow!

- [Planet Minecraft](#)
- [Minecraft-MP](#)
- [ATLauncher Servers](#)
- [ATLauncher](#)